



Anglo-Chinese School (Independent)

121 Dover Road, Singapore 139650, Republic of Singapore

Tel: (65) 6773 1633 • Fax: (65) 6773 1433

Website: www.acsindep.moe.edu.sg/

CEEB Code: 687213 • IB School Code: 002329



School Profile 2018 – 2019

SCHOOL LEADERS

Mr. Arene KOH, Principal

Ms. CHOCK Siew Hwa, Deputy Principal
Mrs. Judy HO, Deputy Principal
Mr. Patrick SOO, Deputy Principal
Mdm. YONG Lee Har, Deputy Principal

EDUCATION COUNSELLORS:

Mrs. Juliana LIU-TENGARA
Director, Career Opportunities & Guidance
julianatengara@acsindep.edu.sg

Ms. SNG Sok Hwee,
Higher Education Counsellor
sngsokhwee@acsindep.edu.sg

Overview

Founded in 1886, Anglo-Chinese School (Independent) is a school under the Singapore Ministry of Education and an International Baccalaureate (IB) World School.

ACS (Independent) is distinctive for its quest for excellence and focus on all-round, values-centric development, anchored in a school environment of family and community.

“Our school’s core purpose is to nurture our students to be catalysts for change with Godly values and robust character, equipped and willing to serve and lead in the family, nation and the global community.”

Admission is by merit. The school has an enrolment of 2,800 students comprising Years 1 to 6 (*Grades 7 – 12*). Years 1 – 4 admits only boys while Years 5 & 6 are co-ed.

Academic Programmes

ACS (Independent) offers 2 academic tracks:

- 4-year Express programme leading to GCE ‘O’ Level.
- 6-year Integrated Programme (IP) leading to IB Diploma Programme (IBDP).

The IP caters to academically-strong students (*typically the top 10% of the nation’s cohort*) who would benefit from engaging in broader learning experiences during their Secondary and Junior College years.

The IP optimises the time freed up from preparing for the GCE ‘O’ Levels to stretch pupils and provide greater breadth in the academic and non-academic curriculum. The IP curriculum and assessment modes are specially designed to provide coherence with the IB Diploma Programme.

Given the strong academic aptitude of the students, the IP aims to stretch the potential of its students by engaging them in broader learning experiences beyond the academic curriculum.

Academic Calendar

- January to December with 2 semesters.
- Students take the IB exam in November with results expected the following January.

Overall Excellence

The school has consistently produced excellent results in all areas. Its performance in the IBDP continues to set world standards. In the Nov 2017 examination 47.9% scored 43 to 45 points. The maximum score is 45 points.

The school’s sports, performing arts and uniformed groups have continued to emerge in top positions in the national school rankings and competitions. Our students and alumni have represented the country at the Olympic Games since 1964. In international competitions and Olympiads, our students have consistently emerged top in world rankings.

Serving and Leading the Community

Our school’s support for community service locally and internationally is extensive. The school has a long-standing engagement programme with neighbourhood community. Students organise home visits as well as host the residents at school festive celebrations such as the Mid Autumn Festival.

Students volunteer in programmes which provide academic guidance and skills training to underprivileged children, help out with the elderly at daycare centres and support outpatient services at children’s hospitals.

Regional engagement projects extend to China, Cambodia and Thailand. In Guilin, China our students conduct English classes for village children, help with the refurbishment of school facilities and weeding of crop fields.

Talent and Leadership Development

A number of our students pursue their studies under scholarship and talent development programmes offered by the Ministry of Education. These include:

- **Gifted Education Programme:** for highly able students
- **Music Elective Programme:** for students with strong academic & musical abilities
- **Humanities Scholarship Programme:** for outstanding pre-university students to pursue the humanities
- **Regional Studies Programme:** awarded to academically able and linguistically talented students to nurture their understanding of regional culture and development

School-based programmes such as the **Dean’s List Programme** and **Advanced Science Programme** provide highly able and talented students enrichment beyond the syllabus.

Scholarship & University Placements

Though our IBDP students comprise 1% of the country's pre-university student cohort (majority of whom take the GCE 'A' Levels), they have been highly successful in gaining entry to choice courses and universities.

The school has 5 President's Scholars in its 11 cohorts. This is the most prestigious undergraduate scholarship awarded by the Public Service Commission of Singapore. Many others have received prestigious national and international scholarships:

A*Star Biomedical Sciences
 A*Star MBBS Phd
 A*Star National Science Scholarship
 A*Star Undergraduate Scholarship (AUS)
 Agri-Food & Veterinary Authority Scholarship
 Civil Aviation Authority of Singapore Scholarship
 DSTA Undergraduate Scholarship Award
 Economic Development Board Scholarship
 Energy Market Authority Undergraduate Scholarship
 GIC Global Scholarship
 Health Promotion Board Undergraduate Scholarship
 Housing & Development Board Scholarship
 International Enterprise Singapore Undergraduate Scholarship
 Jardine Scholarship
 Land Transport Authority Undergraduate Scholarship
 Monetary Authority of Singapore Scholarship
 Ministry of Home Affairs Local Merit Award
 Ministry of Foreign Affairs Scholarship
 Ministry of Information, Communication and the Arts Scholarship
 Ministry of National Development EDGE Scholarship
 Ministry of Education Merit / Teaching Scholarship Award
 Ministry of Health Holdings Healthcare Merit Award
 Ministry of Health Holdings Allied Health & Nursing Scholarship
 National Heritage Board Scholarship
 National Health Group Scholarship
 National Infocomm Scholarship
 National Library Board Scholarship
 Nanyang Technological University Undergraduate Scholarships
 NUS Kent Ridge Merit Scholarship for Law
 NUS University Scholars Programme
 President's Scholarship
 Public Service Commission Scholarships
 Singapore Armed Forces Defence Merit Scholarship
 Singapore Armed Forces Merit Scholarship (SMS)
 Singapore Armed Forces Local Medicine Scholarship
 Singapore Armed Forces Overseas Scholarship Award
 Singapore Airlines Open Scholarship
 Singapore-Industry Scholarship (SglS)
 Singapore Police Force Overseas Scholarship
 Singapore Press Holdings Scholarship
 Singapore Tourism Board Scholarship
 SPRING Executive Development Scholarship Award
 SUTD Asian Leadership Programme Scholarship
 SUTD Global Leadership Programme Scholarship
 Urban Redevelopment Authority Undergraduate Scholarship
 Yale-NUS Global Leader Scholarship
 Yale-NUS Sharon-Ann Eravelly Scholarship

IB Diploma Programme Class of 2018

The graduating class of 2018 has 452 students, the majority of whom are Singaporeans. Students may be admitted at Year 1 (Grade 7), Year 3 (Grade 9) or Year 5 (Grade 11) and sit for the IBDP examination at Year 6 (Grade 12). The IBDP cohort comprises the IP students in their 5th and 6th years as well as top performing GCE 'O' Level students.

ACS(I) IBDP students offer the full IB diploma comprising three Higher Level (HL) subjects, three Standard Level (SL) subjects as well as three core requirements of the IBDP:

- **Extended Essay (EE)**, a 4,000 word essay which acquaints students with the independent research and writing skills expected at university.
- **Theory of Knowledge (TOK)** course, which explores the nature of knowledge across disciplines, encouraging an appreciation of other cultural perspectives.
- **Creativity, Activity, Service (CAS)** which encourages students to be involved in artistic pursuits, sports and community service work, fostering students' awareness and appreciation of life outside the academic arena.

One subject must be chosen from each of the Groups 1 to 5, and the 6th subject can be chosen from any group, except Group 2. Our students are allowed to take a *maximum of 3 HL and 3 SL subjects*. The medium of instruction is **English**.

Group 1: Language A	
English: Literature; Language & Literature (SL/HL)	
Group 2: Second Language	
Language B (SL) – Chinese / Malay / Tamil / Hindi	
Language ab initio (SL) – Spanish / French / Mandarin / Malay	
Group 3: Individual & Societies	
Business & Management (HL/SL)	Geography (HL/SL)
Economics (HL/SL)	History (HL/SL)
Group 4: Experimental Sciences	
Biology (HL/SL)	Chemistry (HL/SL)
Physics (HL/SL)	Computer Science (HL)
Group 5: Mathematics	
Mathematics (HL/SL)	
Group 6: The Arts	
Music (HL)	Visual Arts (HL/SL)

Grading System

We do not rank our students or calculate GPA. Predicted IB Grades are not revealed to our students and are sent by the school along with their academic transcripts for university applications if required.

Students in the Express track follow the GCE 'O' Level grading system while those in the IP track follow the IB grading system. The tables below show the grading scale for individual subjects.

GCE 'O' Level Examination Grading System

The lower the numerical score, the better the academic performance

Grade	A		B		C		D	E
Numerical	1	2	3	4	5	6	7	8

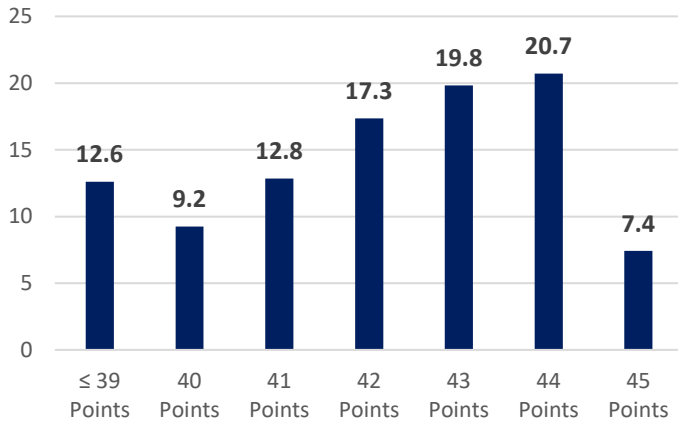
IP / IB Grading System

The higher the numerical score, the better the academic performance

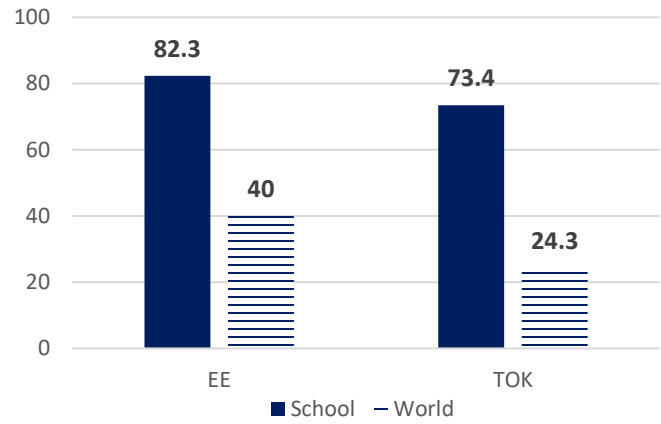
Excellent	Very Good	Good	Satisfactory	Mediocre	Poor	Very Poor
7	6	5	4	3	2	1

ANGLO-CHINESE SCHOOL (INDEPENDENT)
2017 International Baccalaureate Diploma Programme Results

2017 Cohort Point Distribution (%)
Mean Score: 41.8



% Candidates Awarded Grades A & B for EE and TOK



OVERALL SUBJECT RESULTS

	Subject	No. of candidates	Cumulative Percentage of Students who scored		School Average Grade	World Average Grade
			7	≥ 6		
Group 1	HL ENGLISH A: Lang and Literature	29	31.03	86.21	6.17	4.88
	SL ENGLISH A: Lang and Literature	344	22.09	93.31	6.15	5.44
	HL ENGLISH A: Literature	43	37.21	86.05	6.23	5.22
	SL ENGLISH A: Literature	24	8.33	75	5.83	5.20
Group 2	SL FRENCH AB.	8	62.5	75	6.38	5.12
	SL HINDI B	18	16.67	94.44	6.11	5.80
	SL MALAY AB.	6	33.33	100	6.33	5.77
	SL MALAY B	22	90.91	100	6.92	6.47
	SL MANDARIN AB.	7	100	100	7	6.09
	SL CHINESE B	330	99.09	100	6.99	6.76
	SL SPANISH AB.	21	85.71	100	6.86	5.67
	SL TAMIL B	32	87.5	100	6.88	6.42
Group 3	HL BUSINESS & MNGT	29	13.79	72.41	5.86	3.83
	SL BUSINESS & MNGT	86	32.56	93.02	6.26	4.22
	HL ECONOMICS	201	78.11	98.51	6.76	5.34
	SL ECONOMICS	105	87.62	98.1	6.86	5.06
	HL GEOGRAPHY	11	27.27	81.82	6.09	5.23
	SL GEOGRAPHY	12	33.33	91.67	6.25	4.96
	HL HISTORY ASIA & OCEANIA	71	33.8	90.14	6.23	4.01
	SL HISTORY	25	12	72	5.84	4.23
Group 4	HL BIOLOGY	145	75.17	97.93	6.73	4.57
	SL BIOLOGY	25	64	96	6.6	4.04
	HL CHEMISTRY	296	85.81	98.31	6.83	5.23
	SL CHEMISTRY	71	66.2	91.55	6.56	3.75
	HL PHYSICS	183	77.6	95.08	6.69	4.71
	SL PHYSICS	41	65.85	90.24	6.54	4.12
	HL COMPUTER SC.	6	50	66.67	6.17	4.24
Group 5	HL MATHEMATICS	293	59.04	92.15	6.49	4.75
	SL MATHEMATICS	147	72.11	96.6	6.67	4.26
Group 6	HL MUSIC	4	75	100	6.75	5.26
	HL VISUAL ARTS	9	33.33	88.89	6.22	4.82

University Placements

Our alumni have enrolled at the following universities:

AUSTRALIA

Australia Defence Force Academy
Australian National University
James Cook University
La Trobe University
Macquarie University
Monash University
Murdoch University
Queensland University of Technology
University of Adelaide
University of Melbourne
University of Newcastle
University of New South Wales
University of Queensland
University of Sydney
University of Tasmania
University of Western Australia

CANADA

McGill University
University of British Columbia
University of Toronto
University of Victoria
University of Waterloo

CHINA

Fudan University
Peking University
Xi'an Jiaotong Liverpool University

FRANCE

Sciences Po – College Universitaire du Havre

HONG KONG

Chinese University of Hong Kong
City University of Hong Kong
Hong Kong University of Science & Technology
University of Hong Kong

INDIA

National Institute of Technology,
Tiruchirapalli

INDONESIA

Maranatha Christian University
Universitas Pelita Harapan

IRELAND

National University of Ireland
Trinity College Dublin
University College Cork

JAPAN

Kyushu University
Ritsumeikan Asia Pacific University
Tokyo University of Foreign Studies
Waseda University

KOREA

Seoul National University
Yonsei University

MALAYSIA

International Medical University

NETHERLANDS

Delft University of Technology

NEW ZEALAND

Auckland University of Technology
University of Auckland
University of Otago
Victoria University of Wellington

PHILIPPINES

Ateneo de Manila University

SPAIN

IE University

SINGAPORE

Nanyang Technological University
National University of Singapore
Singapore Institute of Management
Singapore Management University
Singapore University of Technology & Design
Yale-NUS College

SWITZERLAND

Ecole Hoteliere de Lausanne
ETH Zurich
Webster University, Geneva

UNITED KINGDOM

Architectural Association School of Architecture
Barts and the London School of Medicine and Dentistry
Bristol University
Cardiff University
Central St Martins College of Arts and Design
Durham University
Glasgow University
Imperial College London
Keele University
King's College London
London School of Economics
Queen Mary, University of London
Royal College of Music
Royal Veterinary College
School of Oriental & African Studies,
University of London
St George's, University of London
Trinity College London
University College London
University of Bath
University of Birmingham
University of Bristol
University of Cambridge
University of Dundee
University of Edinburgh
University of Leeds
University of Liverpool
University of London
University of Manchester
University of Newcastle
University of Nottingham
University of Oxford
University of Sheffield
University of Southampton
University of St Andrews
University of York
Warwick University

UNITED STATES

Amherst College
Bates College
Bentley University
Boston College
Boston University
Brown University
Bryn Mawr College
California Institute of Technology
California Polytechnic State University
California State University Long Beach
Carleton College
Calvin College
Carnegie-Mellon University
Claremont McKenna College

Colorado College
Colgate University
Columbia University
Cornell University
Dartmouth College
Duke University
Embry-Riddle Aeronautical University
Emory University
Franklin and Marshall College
Franklin W. Olin College of Engineering
Georgetown University
George Washington University
Georgia Institute of Technology
Grinnell College
Harvard University
Harvey Mudd College
Indiana University
Johns Hopkins University
Lafayette College
Lewis & Clark College
Maryland Institute College of Art
Massachusetts Institute of Technology
Middlebury College
New York University
Northwestern University
Oberlin College
Parsons the New School for Design
Pennsylvania State University
Pomona College
Princeton University
Rice University
Ringling College of Art & Design
Rutgers, The State University of New Jersey
Sarah Lawrence College
School of the Art Institute of Chicago
Skidmore College
Stanford University
Swarthmore College
The Cooper Union
Truman State University
Tufts University
University of California, Berkeley
University of California, LA
University of California, San Diego
University of Chicago
University of Georgia
University of Illinois at Urbana-Champaign
University of Maryland
University of Miami
University of Michigan, Ann Arbor
University of Nevada, Las Vegas
University of Pennsylvania
University of Southern California
University of Texas
University of Virginia
University of Washington
University of Wisconsin-Madison
Wabash College
Washington University in St Louis
Wellesley College
Wesleyan University
Williams College
Yale University