

School Profile

2025-2026



Anglo-Chinese School
(Independent)

A Methodist Institution
(Founded 1886)

121 Dover Road, Singapore 139650 | Tel: (65) 6773 1633 | Fax: (65) 6773 1433 | www.acsindep.moe.edu.sg | CEEB Code: 687213 | IB School Code: 002329

Our History

Founded in 1886, Anglo-Chinese School (Independent) comes under the Singapore Ministry of Education and is an International Baccalaureate (IB) World School.

ACS(I) is distinctive for its quest for excellence and focuses on all-rounded, values-centric development, anchored in a school environment of family and community.

Admission is by merit. The school has an enrolment of 2,800 students from Years 1 to 6 (Grades 7 to 12). Only boys are admitted to Years 1 to 4 while Years 5 to 6 are co-ed.

Academic Programmes

ACS (Independent) offers 2 academic tracks:

- 4-year Express programme leading to GCE O-Level.
- 6-year Integrated Programme (IP) leading to IB Diploma Programme (IBDP).

The IP caters to academically strong students (typically the top 10% of the nation's cohort) who would benefit from engaging in broader learning experiences during their Secondary and Junior College years.

Our academic calendar begins in January and ends in December of the same year, with two semesters in total.

Our Core Purpose

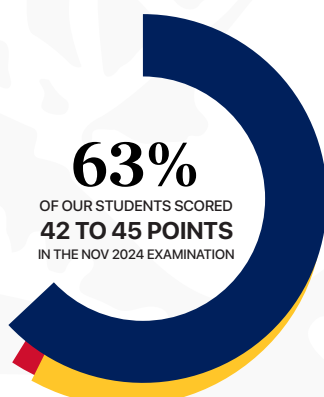
"To nurture our students to be catalysts for change with Godly values and robust character, equipped and willing to serve and lead in the family, nation and the global community."

Overall Excellence

The school has consistently produced excellent results in all areas. Its performance in the IBDP continues to set world standards. **In the Nov 2024 examination, 100% of the cohort was awarded diplomas.** The maximum score is 45 points.

The school's sports, performing arts and uniformed groups have continued to emerge in top positions in the national school rankings and competitions.

In international competitions and Olympiads, our students have also consistently emerged in top placings. Since 1964, some of them have represented the country at the Olympic Games.



School Leaders

Mr. Kevin PANG, Principal
Mrs. Judy HO, Deputy Principal
Mr. Patrick SOO, Deputy Principal
Mr. Terence CHIEW, Deputy Principal
Dr. Andrew YONG, Deputy Principal
Ms. Alice TAN, Deputy Principal
Mr. Bernard CHAN, Deputy Principal

College Counsellors

Mrs. Juliana LIU-TENGARA
Director, Career Opportunities & Guidance
julianatengara@acsindep.edu.sg

Mr. Jamin JEOW
Deputy Director, Career Opportunities & Guidance
jamin@acsindep.edu.sg

Ms. Kirenjit KAUR
College Counsellor
kirenjitkaur@acsindep.edu.sg

Talent & Leadership Development

A number of our students pursue their studies under various scholarships and talent development programmes offered by the Ministry of Education. These include:

- Gifted Education Programme
- Music Elective Programme
- Humanities Scholarship Programme
- Regional Studies Programme

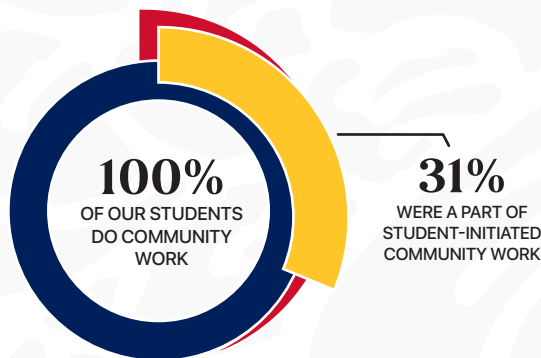
School-based programmes such as the Advanced Science Programme (ASP) and the Advanced Class for Integrative Studies (ACis) provide highly able and talented students enrichment beyond the syllabus.

In August 2023, we were accredited as an 'Athlete-Friendly Education Centre' by World Academy of Sports. This allows us to offer an extended study option, the 3-year IBDP, for our high-performing student athletes to balance the twin rigours of their high-performing sport and the IB course of studies.

Serving & Leading the Community

Service to community is an integral aspect of school life.

Beyond the IB community service requirements, students actively give back to society, especially children and elderly through daycare centres and hospitals. In 2024, they were heavily involved in **student-initiated** community service activities, partnering with more than **100 organisations**.



Nearly 1 in 4 of the students' community service projects initiate partnerships with an overseas partner organisations. Since mid-2022, overseas travel resumed post-pandemic, but many overseas partnerships are now conducted online.



Co-Curricular Activities

ACS(I) offers over **60** different Sports and Games, Performing Arts, Clubs and Societies as well as Uniformed Groups (UGs) as Co-Curricular Activities (CCAs). **Year 1 to 4** students are expected to participate in **two CCAs**, with one being a UG. **Year 5 to 6** students are actively involved in **at least one CCA**, with some taking up multiple CCAs, depending on their interests and time management.

ACS(I) is thankful for the strong showing of our CCAs. Our students have clinched **accolades and championship titles** under various categories, such as:

- Academic Competitions
- Clubs & Societies
- Sports
- Performing Arts
- Uniformed Groups

Scholarships & University Placements

Our IB students comprise 3% of the country's pre-university student cohort, the majority of whom take GCE A-Levels.

The school has **6 President's Scholars in its 19 cohorts**. This is the most prestigious undergraduate scholarship awarded by the Public Service Commission of Singapore. Many others have received prestigious national and international scholarships.

IB Diploma Programme Class of 2024

The graduating class of 2024 has 452 students, the majority of whom are Singaporeans.

Students may be admitted at Year 1 IP (Grade 7), Year 3 IP (Grade 9) or Year 5 (Grade 11) and sit for the IBDP examination at Year 6 (Grade 12). The IBDP cohort comprises the IP students in their 5th and 6th years as well as top performing GCE O-Level students.

ACS(I) IB Diploma Programme

ACS(I) IBDP students offer the full IB diploma comprising three Higher Level (HL) subjects, three Standard Level (SL) subjects as well as three core requirements of the IBDP: Extended Essay (EE), Theory of Knowledge (TOK), and Creativity, Activity, Service (CAS).

One subject must be chosen from each of the Groups 1 to 5. The 6th subject may be an arts subject from Group 6, or an additional subject from Groups 3 or 4. The medium of instruction is **English**.

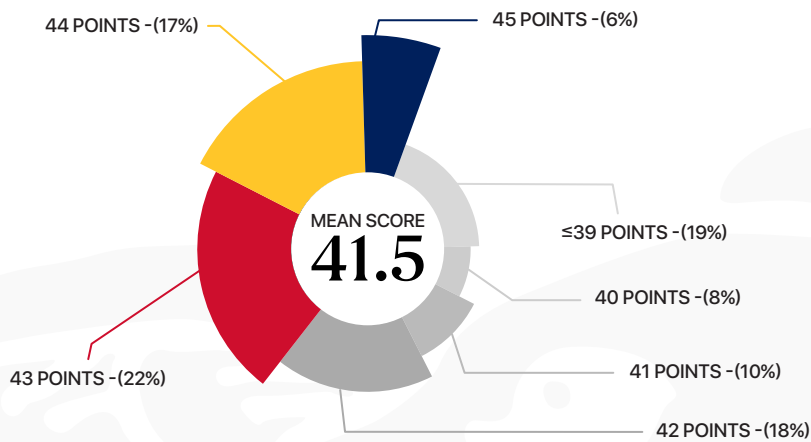
Grading System

We do not rank our students or calculate GPA. Predicted IB Grades are not revealed to our students and are sent by the school along with their academic transcripts for university applications if required.

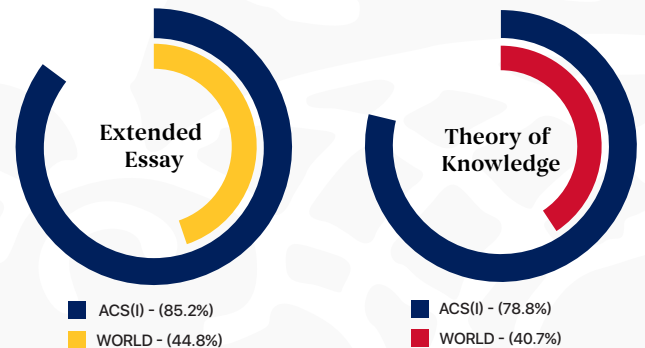
ANGLO-CHINESE SCHOOL (INDEPENDENT)

2024 IB Diploma Programme Results

2024 Cohort Point Distribution



Percentage of Candidates Awarded Grade A & B for EE & TOK

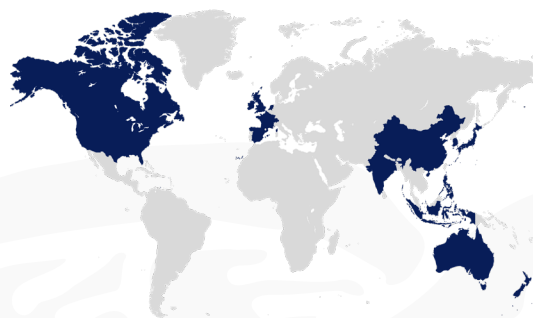


Overall Subject Results

Subject Group	Subject	No of Candidates	Cumulative Percentage of Students Who Scored		School Average Grade	World Average Grade
			7	≥6		
Group 1	HL ENGLISH A: Lang and Literature	27	29.6	81.5	6.1	4.9
	SL ENGLISH A: Lang and Literature	393	10.7	66.2	5.7	5.1
	HL ENGLISH A: Literature	32	6.3	59.4	5.7	5.2
Group 2	SL CHINESE B	17	47.1	88.2	6.4	6.4
	SL FRENCH AB.	3	66.7	66.7	6.0	4.9
	SL HINDI B	23	26.1	95.7	6.2	5.6
	SL SPANISH AB.	13	46.2	84.6	6.3	5.2
Group 3	HL BUSINESS MNGT	37	81.1	100.0	6.8	4.8
	SL BUSINESS MNGT	80	86.3	98.8	6.9	4.4
	HL ECONOMICS	150	54.7	91.3	6.5	5.3
	SL ECONOMICS	167	54.5	95.2	6.5	5.2
	HL GEOGRAPHY	18	55.6	88.9	6.4	5.3
	SL GEOGRAPHY	11	54.6	81.8	6.4	5.1
	HL HISTORY	51	52.9	100.0	6.5	4.1
	SL HISTORY	39	28.2	97.4	6.3	4.3
Group 4	HL BIOLOGY	153	84.3	98.7	6.8	4.6
	SL BIOLOGY	19	68.4	94.7	6.6	3.8
	HL CHEMISTRY	316	84.2	97.2	6.8	5.3
	SL CHEMISTRY	61	63.9	86.9	6.5	4.0
	HL PHYSICS	184	77.2	95.7	6.7	5.0
	SL PHYSICS	42	61.9	88.1	6.5	3.7
	HL COMPUTER SC.	20	70.0	85.0	6.5	4.4
Group 5	HL MATHEMATICS	360	63.9	93.6	6.6	5.1
	SL MATHEMATICS	92	67.4	90.2	6.5	3.9
Group 6	HL MUSIC	3	33.3	100.0	6.3	5.4
	HL VISUAL ARTS	5	40.0	100.0	6.4	4.4

University Placements

Our alumni have enrolled in the following universities:



Countries of which universities our alumni have enrolled in ●

Asia

China

Fudan University
Peking University
Xi'an Jiaotong Liverpool University

Hong Kong

Chinese University of Hong Kong
City University of Hong Kong
Hong Kong University of Science & Technology
University of Hong Kong

India

National Institute of Technology, Tiruchirappalli

Indonesia

Maranatha Christian University
Universitas Pelita Harapan

Japan

Kyushu University
Ritsumeikan Asia Pacific University
Tokyo University of Foreign Studies
Waseda University

Singapore

Nanyang Technological University
National University of Singapore
Singapore Institute of Technology
Singapore Management University
Singapore University of Social Sciences
Singapore University of Technology & Design
Yale-NUS College

South Korea

Seoul National University
Yonsei University

Philippines

Ateneo de Manila University

Oceania

Australia

Australia Defence Force Academy
Australian National University
James Cook University
La Trobe University
Macquarie University
Monash University
Murdoch University
Queensland University of Technology
University of Adelaide
University of Melbourne
University of Newcastle
University of New South Wales
University of Queensland

University of Sydney
University of Tasmania
University of Western Australia

New Zealand

Auckland University of Technology
University of Auckland
University of Otago
Victoria University of Wellington

Canada

McGill University
University of British Columbia
University of Toronto
University of Victoria
University of Waterloo

Europe

France

Sciences Po – College Universitaire du Havre

Ireland

National University of Ireland
Trinity College Dublin
University College Cork

Netherlands

Delft University of Technology

Spain

IE University

Switzerland

Ecole Hoteliere de Lausanne
ETH Zurich
Webster University, Geneva

United Kingdom

Architectural Association School of Architecture
Bristol University
Cardiff University
Central St Martins College of Arts and Design
Durham University
Glasgow University
Imperial College London
Keele University
King's College London
London School of Economics
Queen Mary, University of London
Royal College of Music
Royal Veterinary College
School of Oriental & African Studies, University of London
St George's, University of London
Trinity College London
University College London
University of Bath
University of Birmingham
University of Bristol
University of Cambridge
University of Dundee
University of Edinburgh
University of Leeds
University of Liverpool
University of London
University of Manchester
University of Newcastle
University of Nottingham
University of Oxford
University of Sheffield
University of Southampton
University of St Andrews
University of Warwick
University of York

United States

Amherst College
Bates College
Bentley University
Boston College
Boston University
Brown University
Bryn Mawr College
California Institute of Technology
California Polytechnic State University
California State University
Long Beach Carleton College
Calvin College
Carnegie-Mellon University
Claremont McKenna College
Colorado College
Colgate University
Columbia University
Cornell University
Dartmouth College
Duke University
Embry-Riddle Aeronautical University
Emory University
Franklin and Marshall College
Franklin W. Olin College of Engineering
Georgetown University
George Washington University
Georgia Institute of Technology
Grinnell College
Harvard University
Harvey Mudd College
Indiana University
Johns Hopkins University
Lafayette College
Lewis & Clark College
Maryland Institute College of Art
Massachusetts Institute of Technology
Middlebury College
New York University
Northwestern University
Oberlin College
Parsons the New School for Design
Pennsylvania State University
Pomona College
Princeton University
Rice University
Ringling College of Art & Design
Rutgers, The State University of New Jersey
Sarah Lawrence College
School of the Art Institute of Chicago
Skidmore College
Stanford University
Swarthmore College
The Cooper Union
Truman State University
Tufts University
University of California, Berkeley
University of California, LA
University of California, San Diego
University of Chicago
University of Georgia
University of Illinois at Urbana-Champaign
University of Maryland
University of Miami
University of Michigan, Ann Arbor
University of Nevada, Las Vegas
University of Pennsylvania
University of Southern California
University of Texas
University of Virginia
University of Washington
University of Wisconsin-Madison
Wabash College
Washington University in St Louis
Wellesley College
Wesleyan University
Williams College
Yale University